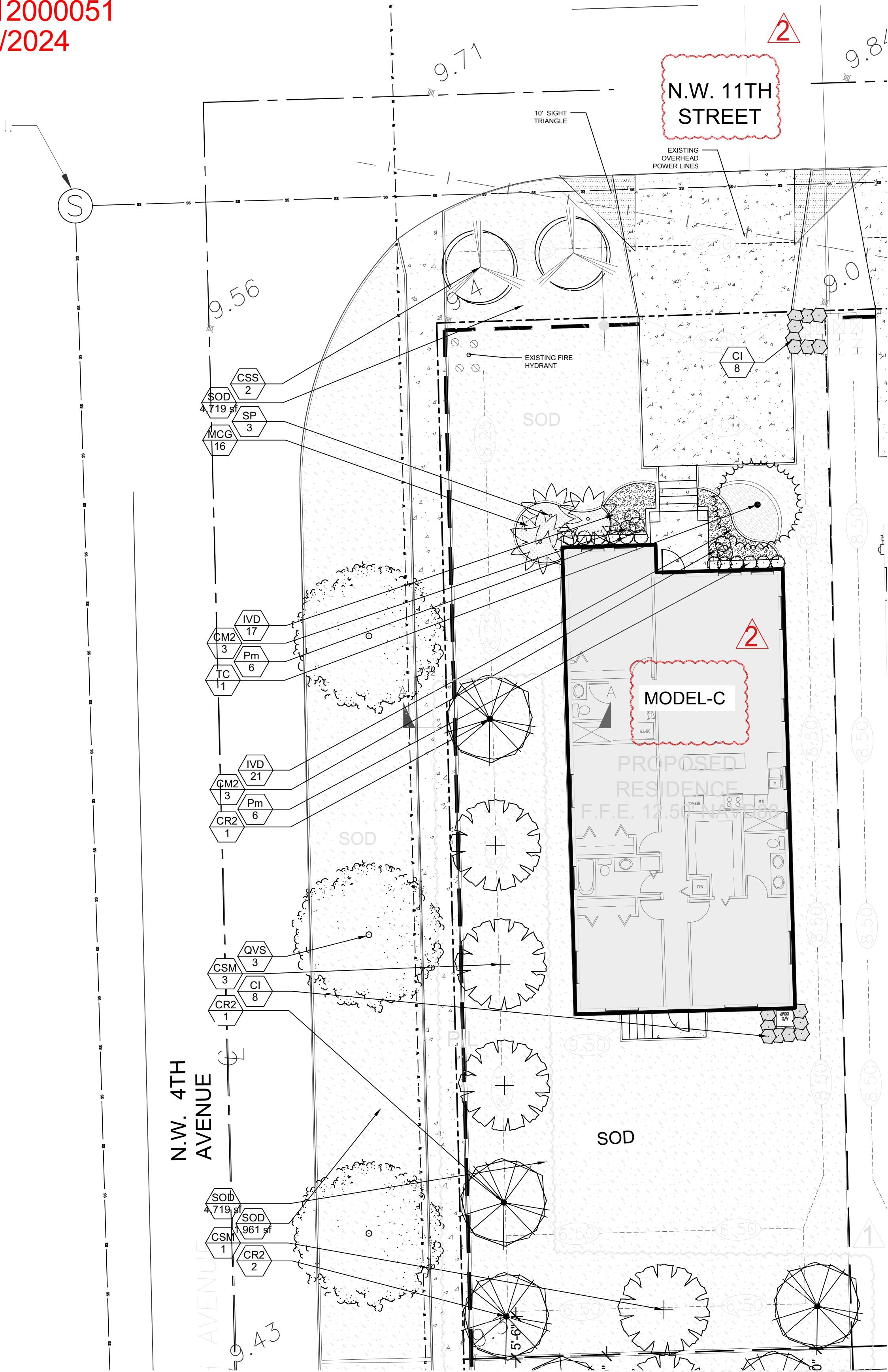


DRC

PZ23-12000051
05/15/2024



PLANT SCHEDULE A

CODE	QTY	BOTANICAL / COMMON NAME	CONTAINER	DBH	SIZE	NATIVE	DROUGHT TOLERANCE	DETAIL	REMARKS	
TREES										
CR2	4	Clusia rosea 'Pitch Apple' / Balsam Apple	FG/B&B	2"Cal	12' HT. X 5' SPR.	Yes	High			
FLOWERING TREES										
TC	1	Tabebuia caraiba / Silver Trumpet	FG/B&B	2.5"Cal	12' HT. X 5' SPR.	No	High			
MITIGATION TREES										
CSM	4	Conocarpus erectus f. sericeus / Silver Buttonwood	FG/B&B	2"Cal	12' HT. X 5' SPR.	Yes	High			
PALM TREES										
SP	3	Sabal palmetto / Cabbage Palmetto	FG/B&B		14'-20" OA, Vary Heights	Yes	High			
STREET TREES										
CSS	2	Conocarpus erectus sericeus / Silver Buttonwood	FG/B&B	2" Cal.	12' HT. X 5' SPR.	Yes	High			
QVS	3	Quercus virginiana / Southern Live Oak	FG/B&B	3"Cal	14' HT x 6' SPR	Yes	High			
CODE	QTY	BOTANICAL / COMMON NAME	SIZE	CONTAINER	SIZE	NATIVE	DROUGHT TOLERANCE	DETAIL	REMARKS	
SHRUBS										
CI	16	Chrysobalanus icaco / Coco Plum	-		30" HT. X 24" SPD	Yes	HIGH			
CM2	6	Codiaeum variegatum 'Mammy' / Mammy Croton	-		18"x18"	No	High			
Pm	12	Podocarpus macrophyllus / Yew Pine	-		30" HT. X 24" SPD	No	High			
CODE	QTY	BOTANICAL / COMMON NAME	SIZE	CONTAINER	SIZE	NAITVE	DROUGHT TOLERANCE	SPACING	DETAIL	REMARKS
SHRUB AREAS										
IVD	38	Ilex vomitoria 'Stokes dwarf' / Dwarf Yaupon Holly	-		14" HT x 16" SPR	Yes	High	18" o.c.		
CODE	QTY	BOTANICAL / COMMON NAME	SIZE	CONTAINER	SIZE	NATIVE	DROUGHT TOLERANCE	SPACING	DETAIL	REMARKS
GROUND COVERS										
DTB	11	Dianella tasmanica / Blueberry Flax Lily	-		16" HT x 16" SPR @	No	Medium	24" o.c.		
SOD/SEED										
SOD	6,680 sf	Stenotaphrum secundatum 'Floritam' / 'Floritam' St. Augustine Sod	sod							
TALL GROUND COVERS										
MCG	16	Muhlenbergia capillaris / Pink Muhly Grass	-	Yes	24" HT. x 24" SPR.	Yes	Medium	24" o.c.		

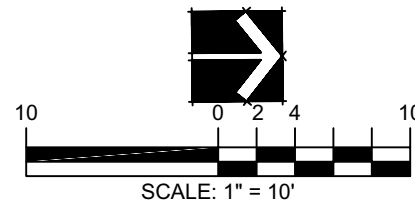
HOUSE TYPE 1 - LANDSCAPE CALCULATIONS

ZONING: (RS-4)

SINGLE FAMILY RESIDENCE

ARTICLE 5

GROSS SITE AREA	6,075 S.F.	
OPEN SPACE / PERVIOUS AREA	3,847 S.F.	63.34%
TOTAL IMPERVIOUS AREA	2,227 S.F.	36.66%
	REQUIRED	PROVIDED
(C) MINIMUM DEVELOPMENT SITE LANDSCAPING		
TABLE 155.5203.C		
(5) TREES AND 30 SHRUBS	5 TREES	10 TREES
30 SHRUBS	30 SHRUBS	30+ SHRUBS
G. STREET TREES		
(1) TREE PER EVERY 40 FEET OF STREET FRONTAGE (EXIST. OWH 25' O.C.)		
NW 11TH STREET 50 L.F. /25 FT.=2 TREES	2 TREES	2 TREES
NE 4TH AVENUE 135.5 L.F. / 40 FT.=3.3 TREES	3 TREES	3 TREES
TOTAL TREES	10 TREES	15 TREES
50% OF TOTAL TREES SHALL BE NATIVE SPECIES	8 TREES	14 TREES
NO MORE THAN 50% PERCENT REQ. TREES TO BE PALMS	5 (3:1=15 PALMS)	3 (3:1=3 PALMS)
50% OF REQ. PALMS TO BE 18' H.	2.5	3



KNOW WHAT'S BELOW
ALWAYS CALL 811
BEFORE YOU DIG
It's fast, it's free, it's the law.
Call 811 two business days
before digging

FOLIAGE
EXPRESSIONS
8801 SW 192nd Terrace,
Cutler Bay, FL 33157



Digitally
Signed by
James B
Euell
Date:
2024.03.22
08:51:25
-04'00'

PROPOSED 12 HOUSES

NW 10TH STREET
POMPANO BEACH, FL 33060

DISTRIBUTION:	DATE:
↑ PERMIT COMMENTS	03-22-24
△ PERMIT COMMENTS	03-22-24

DRAWING NAME:
HOUSE MODEL-C
AT NW 11TH
STREET
LANDSCAPE PLAN
AND SCHEDULE

DRAWING NUMBER:

L-211